

## Circular SAW Mountings ●



### Features

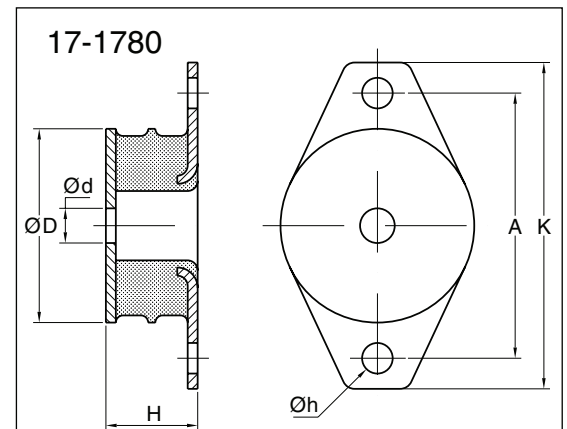
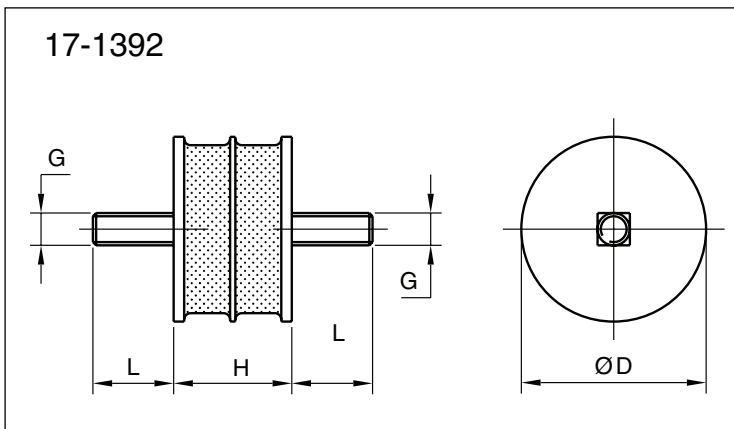
The metal interleaf incorporated (17-1392) in the design provides a higher compression to shear stiffness ratio, thereby increasing the load capacity in the compression or combined compression and shear modes.

The 17-1780 engine mounting features a void in the rubber section to allow the use of a central snubber device.

### Metalastik® type Circular SAW Mountings

Used in a variety of industrial applications including vibratory rollers and small screens or for the suspension of smaller type I.C. engines.

17-1780 can be fitted with a rebound washer for mobile applications.



Circular SAW mountings		Dimensions in mm								Max load in	Max load in	Weight
Type	Part no.	D	H	L	G	A	K	d	h	compression (kg)	shear (kg)	(kg)
17-1392-45	10-00492-01	57	37	25	M10					120	90	0.28
17-1392-60	10-00493-01	57	37	25	M10					250	90	0.28
17-1392-70	10-00494-01	57	37	25	M10					330	90	0.28
17-1780-45	10-00577-01	95	45			130	160	17	15	190	135	0.81
17-1780-60	10-00578-01	95	45			130	160	17	15	380	160	0.81