

## Fanflex™



### Features

Simple design with metal parts encapsulated in high grade oil-resisting rubber compound giving good environmental resistance.

Provides relatively large static deflections and hence a high degree of vibration attenuation - 90% isolation for disturbing frequencies of 15 Hz ( 900 c.p.m ).

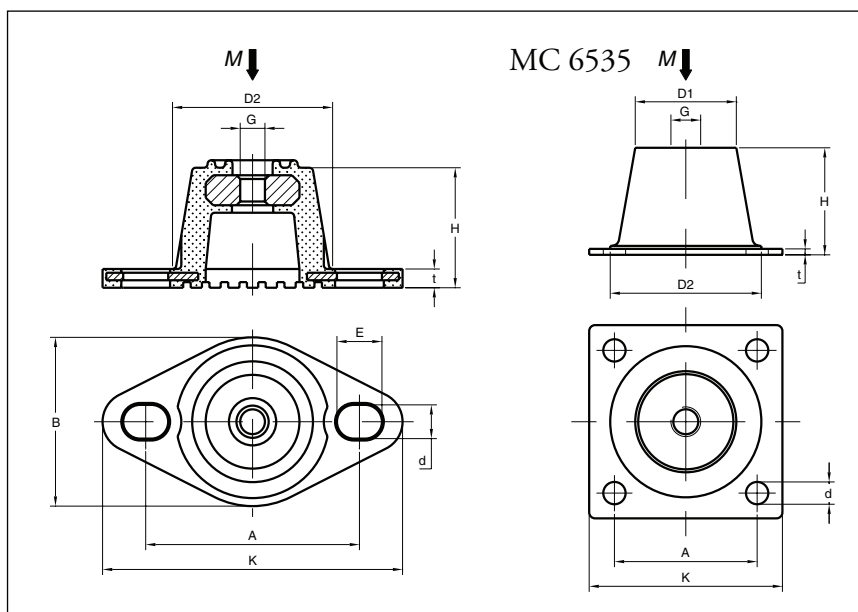
Range gives capacity for point loads of 35 kg to 350 kg.

### Metalastik® type Fanflex™

A simple mounting designed predominantly for the suspension of heating, ventilating and air conditioning equipment.

May be used for:

Pumps, fans, compressors and control cabinets.



| Type           | Part no.    | Dimensions in mm |    |    |    |    |    |    |     |     | Weight (kg) | M-Max (kg) | Colour code |        |
|----------------|-------------|------------------|----|----|----|----|----|----|-----|-----|-------------|------------|-------------|--------|
|                |             | A                | K  | H  | B  | D1 | D2 | E  | G   | d   |             |            |             | t      |
| Fanflex 100-45 | 20-00518-01 | 57               | 80 | 32 | 45 |    | 41 | 12 | M8  | 9   | 5           | 0.09       | 35          | yellow |
| Fanflex 100-55 | 20-00519-01 | 57               | 80 | 32 | 45 |    | 41 | 12 | M8  | 9   | 5           | 0.09       | 65          | blue   |
| Fanflex 100-65 | 20-00520-01 | 57               | 80 | 32 | 45 |    | 41 | 12 | M8  | 9   | 5           | 0.09       | 100         | red    |
| Fanflex 200-45 | 20-00521-01 | 71               | 95 | 45 | 60 |    | 56 | 14 | M10 | 9   | 5           | 0.22       | 130         | yellow |
| Fanflex 200-55 | 20-00522-01 | 71               | 95 | 45 | 60 |    | 56 | 14 | M10 | 9   | 5           | 0.22       | 225         | blue   |
| Fanflex 200-65 | 20-00523-01 | 71               | 95 | 45 | 60 |    | 56 | 14 | M10 | 9   | 5           | 0.22       | 350         | red    |
| MC 6535-45     | 20-00662-01 | 48               | 65 | 36 |    | 34 | 51 | 8  | M10 | 7.5 | 2           | 0.12       | 45          | white  |
| MC 6535-55     | 20-00663-01 | 48               | 65 | 36 |    | 34 | 51 | 8  | M10 | 7.5 | 2           | 0.12       | 75          | red    |
| MC 6535-65     | 20-00664-01 | 48               | 65 | 36 |    | 34 | 51 | 8  | M10 | 7.5 | 2           | 0.12       | 115         | black  |